



OFFICE OF THE PRINCIPAL
DR. BHIMRAO AMBEDKAR GOVT. COLLEGE BALODA
DIST. - MAHASMUND (C.G.)

Website- www.govtcollegebaloda.ac.in

Email- govtcollegebaloda2012@gmail.com

Feedback Analysis Report (Academic Session 2022-23)

Dr. Bhimrao Ambedkar Govt. College Baloda

Dist Mahasamund

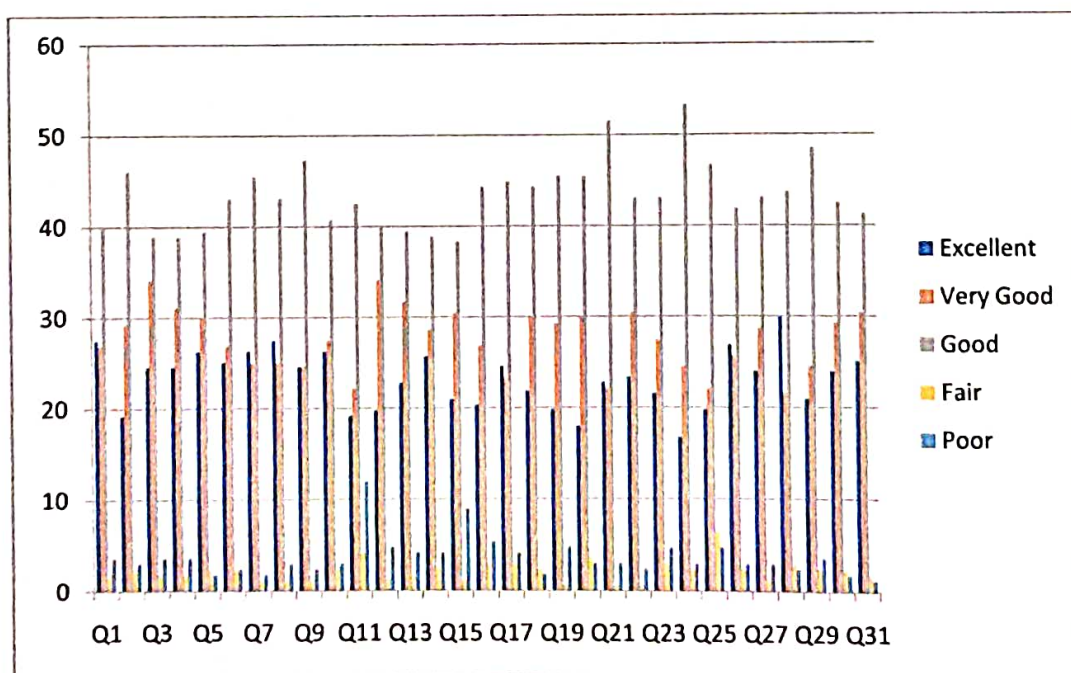
Feedback Analysis

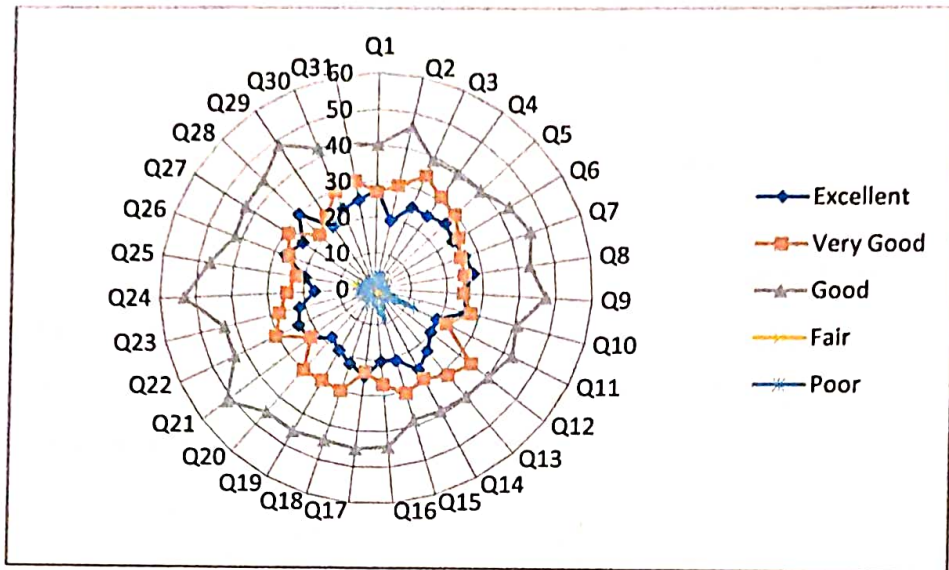
Feedback from Students for session 2022-23

Particular	Question	Excellent	Very Good	Good	Fair	Poor
Teachers cover the syllabus with clear explanations on all topics and helps to improve student performance	Q1	27.5	26.9	40.1	1.8	3.6
Teachers clarify students doubts and take remedial measures for weak students	Q2	19.2	29.3	46.1	2.4	3
Teachers organise and facilitate students to participate in guest lectures/ seminars/ workshops/field visit/project on regular basis	Q3	24.6	34.1	38.9	1.8	3.6
Induction program was organised for students.	Q4	24.6	31.1	38.9	1.8	3.6
Teachers mentor students on regular basis to improve the academic performance and motivate them to participate in co-curricular and extra-curricular activities	Q5	26.3	29.9	39.5	2.4	1.8
Laboratory experiments enable experimental learning to understand concepts	Q6	25.1	26.9	43.1	2.4	2.4
Internal Tests and Annual examinations are periodically conducted towards students continuous evaluation and follow up actions taken based on evaluation	Q7	26.3	25.1	45.5	1.2	1.8
Students' results and attendance records are transparent and communicated to students and parents through message	Q8	27.5	25.1	43.1	1.2	3
Value added programs are useful to strengthen technical knowledge and skills which in turn helps towards employ ability	Q9	24.6	24.6	47.3	1.2	2.4
Teachers practice Outcome Based Education and achieve Course and Program outcomes towards students' knowledge, skill and behavior.	Q10	26.3	27.5	40.7	2.4	3

Equipment and computers are available to meet students requirements.	Q11	19.2	22.2	42.5	4.2	12
Library ambience is good and facilitate self learning	Q12	19.8	34.1	40.1	1.2	4.8
Library is having good number of text and reference books and additional books for competitive exams.	Q13	22.8	31.7	39.5	1.8	4.2
Co and extra Curricular (Sports & Games) facilities give good opportunities to explore themselves.	Q14	25.7	28.7	38.9	2.4	4.2
Quality, Clean drinking water is available	Q15	21	30.5	38.3	1.2	9
Toilets/Washrooms/Common rooms are hygienic and well maintained.	Q16	20.4	26.9	44.3	3	5.4
Availability of adequate infrastructure and physical facilities viz., classrooms, laboratories, ICT etc.	Q17	24.6	23.4	44.9	3	4.2
Institution integrates crosscutting issues relevant to Professional Ethics, Gender, Human Values, Environment and Sustainability into the Curriculum solving methodologies are used for enhancing learning experiences using ICT tools	Q18	21.9	29.9	44.3	2.4	1.8
Student centric methods, such as experiential learning, participative learning and problem	Q19	19.8	29.3	45.5	0.6	4.8
Mechanism of internal/ external assessment is transparent and the grievance redressal system is time-bound and efficient	Q20	18	29.9	45.5	3.6	3
Programme Outcomes (POs) and Course Outcomes (COs) for all Programmes offered by the institution are stated and displayed on website and attainment of POs and COs are evaluated	Q21	22.8	22.2	51.5	0.6	3
Institution has created an ecosystem for innovations and has initiatives for creation and transfer of knowledge	Q22	23.4	30.5	43.1	0.6	2.4
workshops/seminars/conferences including on Research Methodology, Intellectual Property Rights (IPR) and entrepreneurship conducted by institution	Q23	21.6	27.5	43.1	3	4.8

Extension activities are carried out in the neighborhood community, sensitizing you to social issues, for your holistic development, and impact.	Q24	16.8	24.6	53.3	2.4	3
Institution frequently updates its IT facilities and provides sufficient bandwidth for internet	Q25	19.8	22.2	46.7	6.6	4.8
Scholarships and freeships are provided	Q26	26.9	25.7	41.9	2.4	3
Capacity building and skills enhancement initiatives taken by the institution	Q27	24	28.7	43.1	1.2	3
Guidance for competitive examinations and career counseling offered by the Institution	Q28	29.9	21.6	43.7	3	2.4
The Institution has a transparent mechanism for timely redressal of student grievances including sexual harassment and ragging cases	Q29	21	24.6	48.5	2.4	3.6
Students are part of Institutional governance and leadership	Q30	24	29.3	42.5	2.4	1.8
Measures initiated by the Institution for the promotion of gender equity and Institutional initiatives to celebrate / organize national and international commemorative days, events and festivals	Q31	25.1	30.5	41.3	1.8	1.2





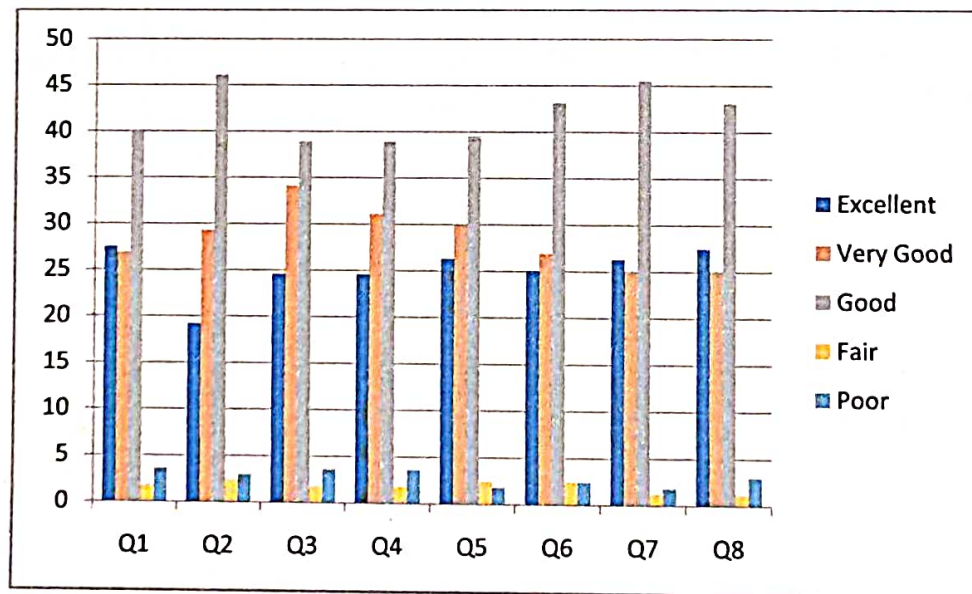
IQAC Analysis of students 's Feedback on the academic performance and ambience of the institution: 23.25 % students are given their reply in excellent, 27.56 % very good ,43.41% good, 2.20 fair and 3.69 replied poor.

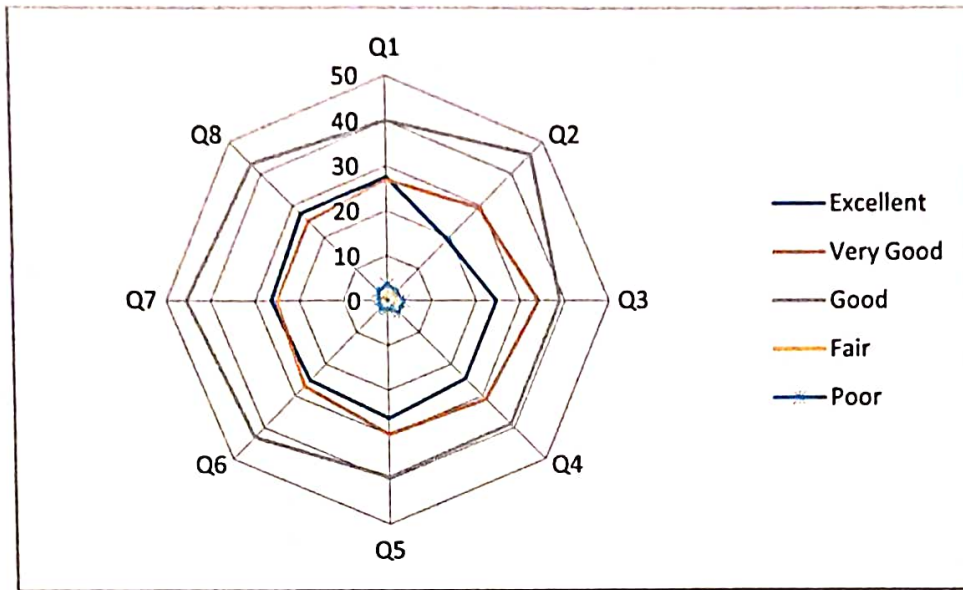


Azhar
PRINCIPAL
 Dr. B.R. Ambedkar
 Govt. College baloda
 Distt.- Mahasamund (C.G.)

Feedback from Teachers for session 2022-23

Particular	Question	Excellent	Very Good	Good	Fair	Poor
Relevance of the Curriculum	Q1	16.7	66.7	16.7	0	0
Balance Between Theory and Practical	Q2	33.3	50	0	16.7	0
Availability of the Study Material in the Library	Q3	16.7	66.7	0	16.7	0
Opportunities to Learn and Grow	Q4	33.3	50	16.7	0	0
Satisfaction with the Methods of Teaching	Q5	0	83.3	16.7	0	0
Infrastructure and Lab Facilities for Curriculum	Q6	16.7	50	33.3	0	0
Timely Updating of Curriculum	Q7	33.3	50	16.7	0	0
Overall Academic Environment	Q8	33.3	33.3	33.3	0	0





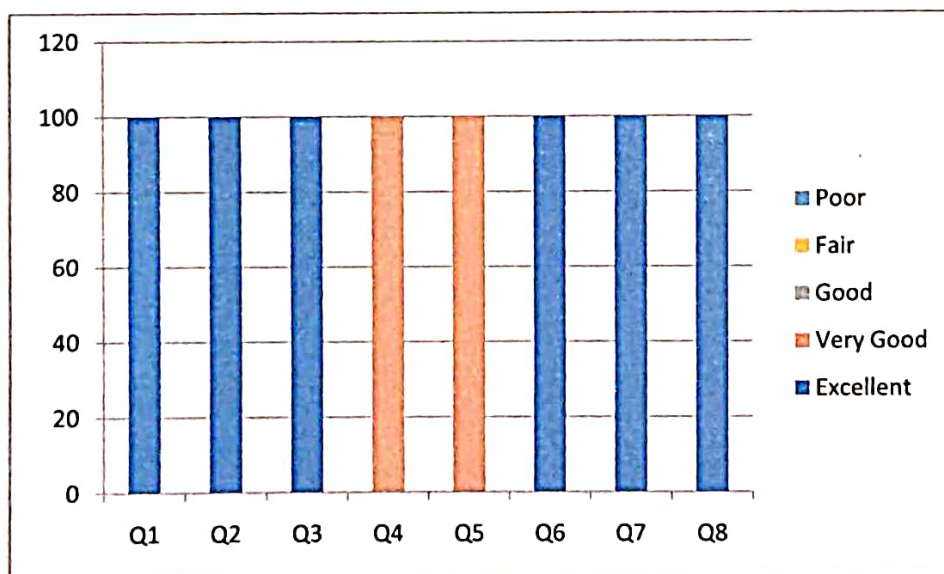
IQAC Analysis of Teacher's Feedback on the academic performance and ambience of the institution: 22.9 % teachers are given their reply in excellent, 56.25 % very good ,16.67% good and 4.17 replied fair.

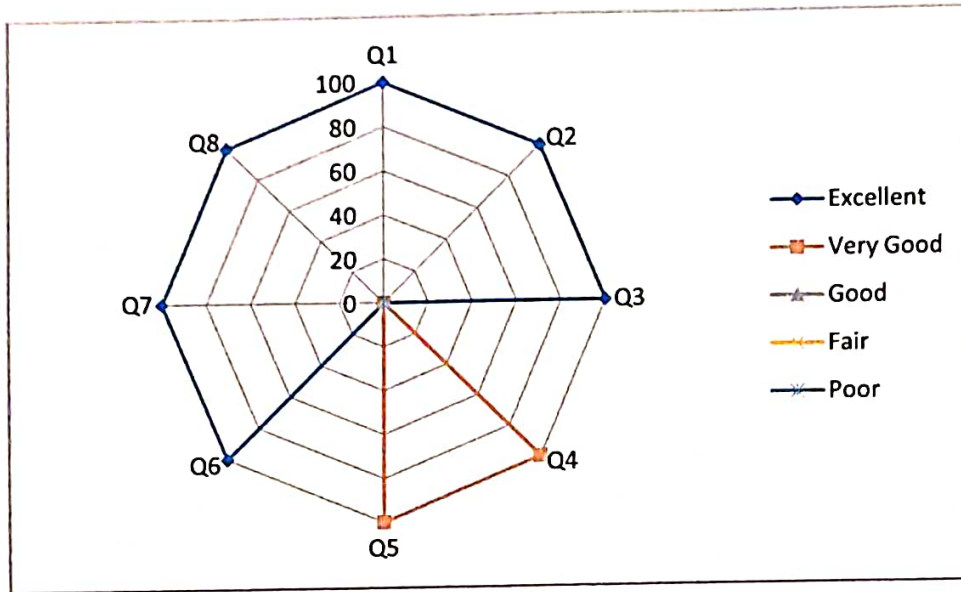


Aptel
PRINCIPAL
Dr. B.R. Ambedkar
Govt. College baloda
Distt.- Mahasamund (C.G.)

Feedback from Alumni for session 2022-23

Particular	Question	Excellent	Very Good	Good	Fair	Poor
The Appropriateness of Curriculum	Q1	0	100	0	0	0
Usefulness of Curriculum in Career	Q2	0	100	0	0	0
Usefulness of Curriculum in Career	Q3	0	100	0	0	0
The Study Material given for the Curriculum is Updated and Relevant	Q4	50	50	0	0	0
The Curriculum was intended to assist the Practical Skills	Q5	100	29.9	0	0	0
The way of Teaching is Appropriate with respect to Curriculum	Q6	50	50	0	0	0
Teaching Aids used to cover the Curriculum	Q7	50	50	0	0	0
The Curriculum is Appropriate to enhance the Employment Opportunities	Q8	100	0	0	0	0





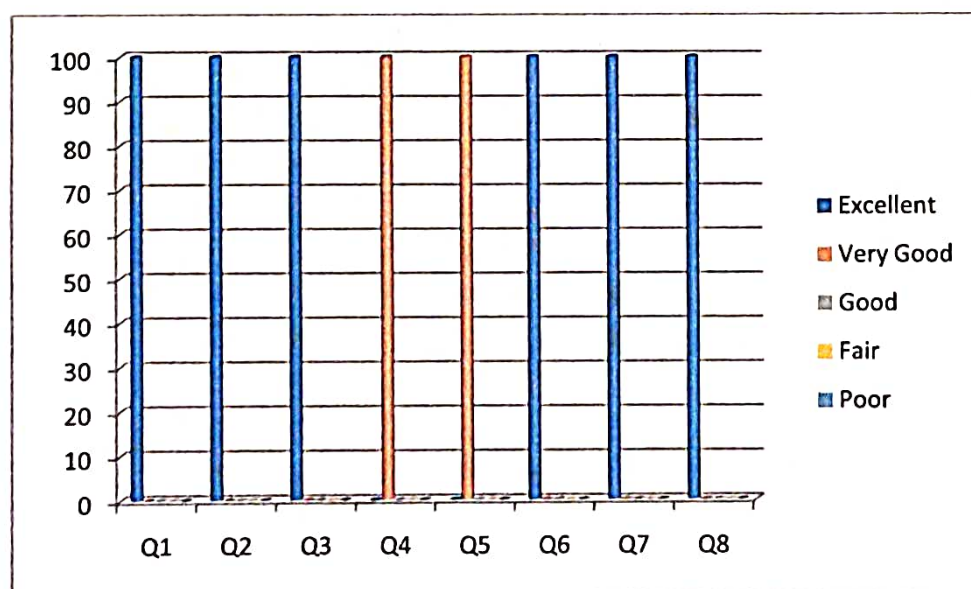
IQAC Analysis of Alumni's Feedback on the academic performance and ambience of the institution: 43.75% Alumni are given their reply in excellent, 56.25 % very good.

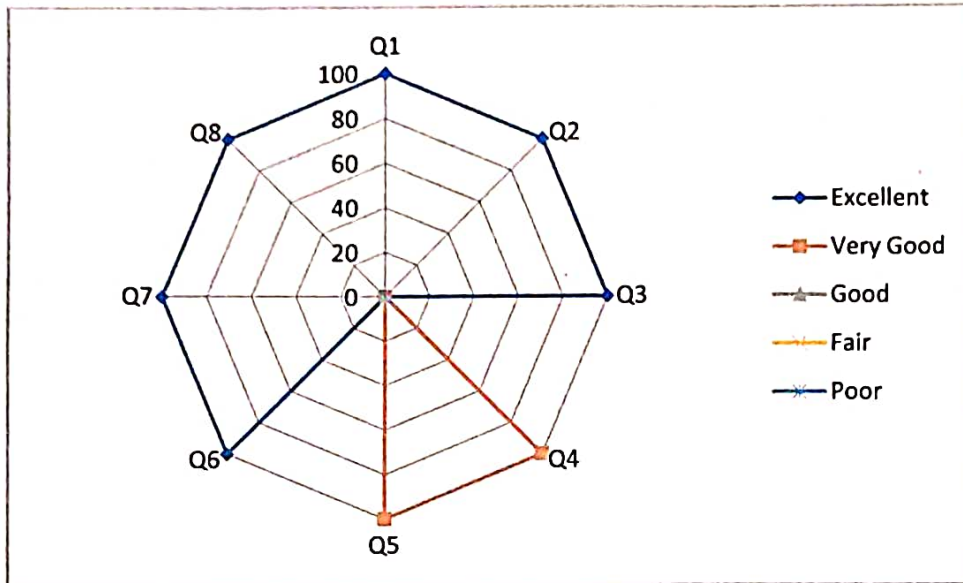


Apfel
PRINCIPAL
Dr. B.R. Ambedkar
Govt. College baloda
Distt.- Mahasamund (C.G.)

Feedback from Employer for session 2022-23

Particular	Question	Excellent	Very Good	Good	Fair	Poor
The Appropriateness of Curriculum	Q1	100	0	0	0	0
Usefulness of Curriculum in Career	Q2	100	0	0	0	0
Usefulness of Curriculum in Career	Q3	100	0	0	0	0
The Study Material given for the Curriculum is Updated and Relevant	Q4	0	100	0	0	0
The Curriculum was intended to assist the Practical Skills	Q5	0	100	0	0	0
The way of Teaching is Appropriate with respect to Curriculum	Q6	100	0	0	0	0
Teaching Aids used to cover the Curriculum	Q7	100	0	0	0	0
The Curriculum is Appropriate to enhance the Employment Opportunities	Q8	100	0	0	0	0





IQAC Analysis of Employer's Feedback on the academic performance and ambience of the institution: 75% Employers are given their reply in excellent, 25 % very good.



Apple
PRINCIPAL
Dr. B.R. Ambedkar
Govt. College baloda
Distt.- Mahasamund (C.G.)

Action Taken Report: Structured feedback received from 1- Students, 2- Teachers, 3- Employers and 4- Alumni for Design and Review of academic performance and ambience of the institution were analyzed and it was observed that 23.5% Students, 22.9% Teachers, 43.75% Alumni and 75% Employers were gave their reply as excellent. 27.56% Students, 56.25% Teachers, 56.25% Alumni and 25% Employers Very good, 43.41% Students and 16.67% Teachers reply is good, 2.20% Students and 4.147 % Teachers reply is Fair and 3.69% students replied poor. Based on the recommendation of feedback of Teachers and Students. Actions are being taken by institution for better result.



Atel
PRINCIPAL
Dr. B.R. Ambedkar
Govt. College baloda
Distt.- Mahasamund (C.G.)